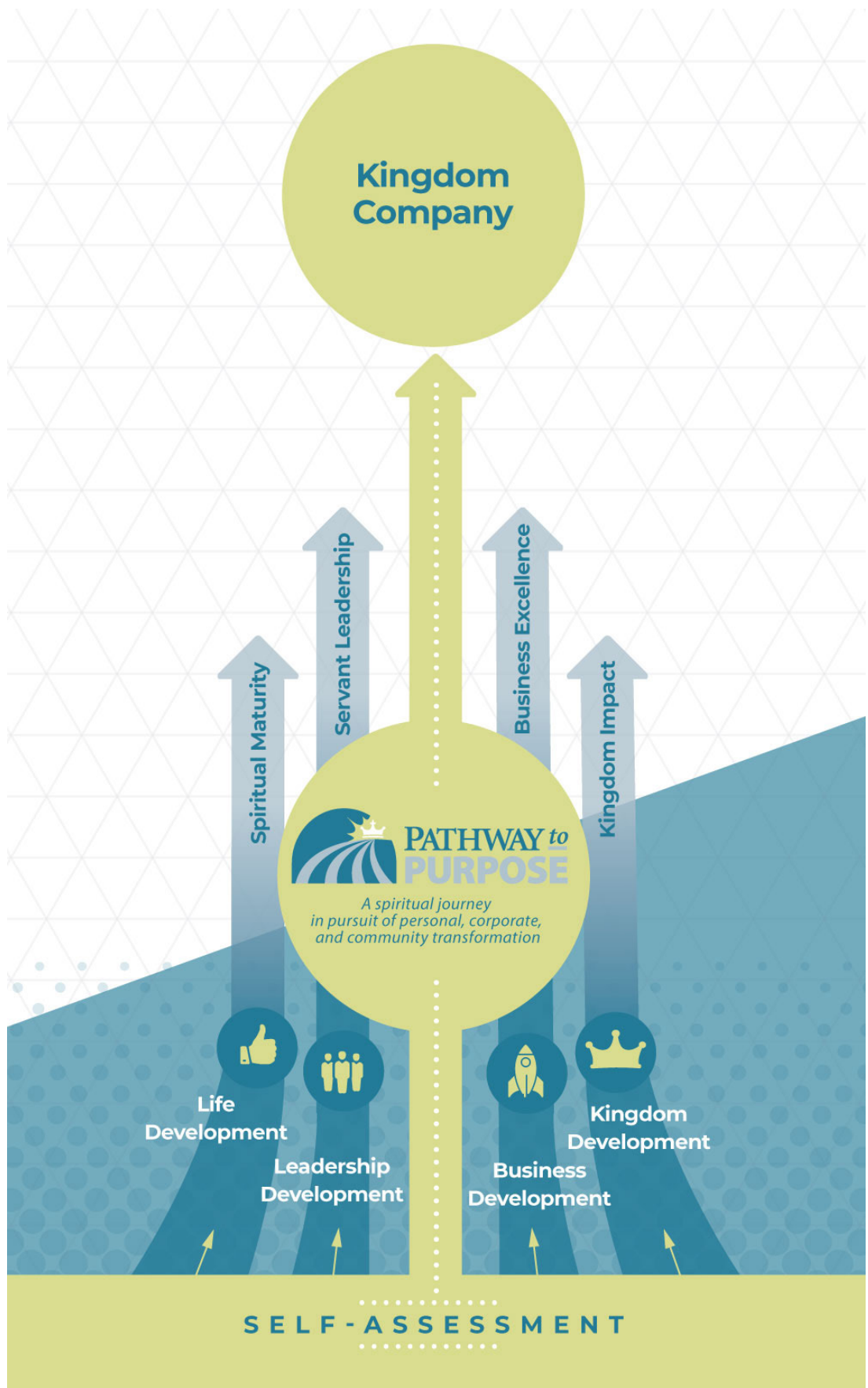


Pathway to Purpose



How do you build a Kingdom company?

The true guide on this transformational journey is Jesus Christ through the working of the Holy Spirit. He alone can transform our lives and subsequently our companies.
He alone can redeem His creation for His purpose.

Life Development

Salvation, a gift of God through Christ. Sanctification, a lifelong process of becoming more like Christ.

Life development occurs as we grow in our application of biblical truth - experiencing an ongoing deepening and expanding of personal faith in Christ. Our real life is hidden in Christ (Colossians 3:3) and it is our desire to see Christian business stewards (owners & leaders) living out Christ's life in every aspect of their daily walk in the marketplace. We must all learn to "love our neighbors as ourself" and thus live out the Gospel for the sake of Christ's Kingdom purposes.

Leadership Development

Business owners carry the mantle of living out the Gospel in front of others, as God's steward (a priest in the Kingdom) of His company.

When we acknowledge the Imago Dei (image of God in all people) in our dealings with employees, vendors and customers - we will display Christ's attitude as we serve people through our leadership responsibilities. The servant leadership model was taught and modeled by Jesus and we should lead others in the same manner. When we serve others with a clear understanding of their God-given value in His Kingdom, we serve them from a place of integrity and honesty.

Business Development

As a steward of God's business, we operate businesses for His glory. As such, our standard of excellence is motivated not by the world's understanding of "perfection" but our desire to honor our King.

As we honor God and pursue Christ's eternal objectives, we will operate a company committed to delivering with excellence on every business promise. Integrity demands it. Our ability to honor Christ before all men, demands it. Our intent to serve others well, demands it. We serve God's redemptive purposes as we lead companies with excellence for His glory (true joy).

Kingdom Development

With a healthy perspective on the purpose of our business in God's Kingdom, we can begin to realize the potential Kingdom impact as God provides opportunity.

When our businesses provide more than employee income and shareholder profit, we will see our stewardship bring life-change to those around us. Our business becomes a means of delivering health, wellness, family wholeness and spiritual growth. As we serve others well, we become conduits of God's love and fulfill our calling to "be the Gospel" in the life of others.